

MOTORCYCLE OWNER' S MANUAL

MODEL: DB-125-10

FOREWORD

Congratulations on your purchase of our product .Your new motorcycle is the product of advanced engineering, exhaustive testing, and continuous striving for superior reliability, safety and performance.

Please read this Owner's Manual carefully before riding so that you will be thoroughly familiar with the proper operation of your motorcycle's controls, Its features,capabilities,and limitations. This manual offers many safe riding tips, but its purpose is not to provide instruction in all the techniques and skills required to ride a motorcycle safely. We strongly recommends that all operators of this vehicle enroll in a motorcycle safely. We strongly recommends that all operators of this vehicle enroll in a motorcycle rider training program to attain awareness of the mental and physical requirements necessary for safe motorcycle operation.

To ensure a long, trouble-free life for your motorcycle, give is the proper care and maintenance described in this manual. Please pay special attention to the part of run-in operation. This manual should be considered a permanent part of the motorcycle and should remain with the motorcycle when it is sold.

All products are subject to change without prior notice or obligation.



BD125-10

CONTENTS

1. STRUCTUREANDPERFORMANCE	1
2. OPERATION	11
3. MAINTENANCE	19
4. MAINTENANCEDURINGPARKING	39
5. MAIN TECHNICAL SPECIFICATION	40

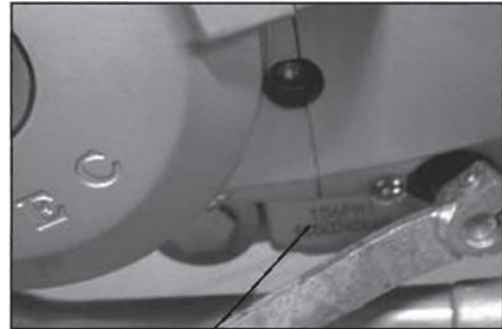
1. STRUCTURE AND PERFORMANCE

FRAME NO AND ENGIN NO INSTRUCTION

The frame No and the engine No are used to get motorcycle license, register.

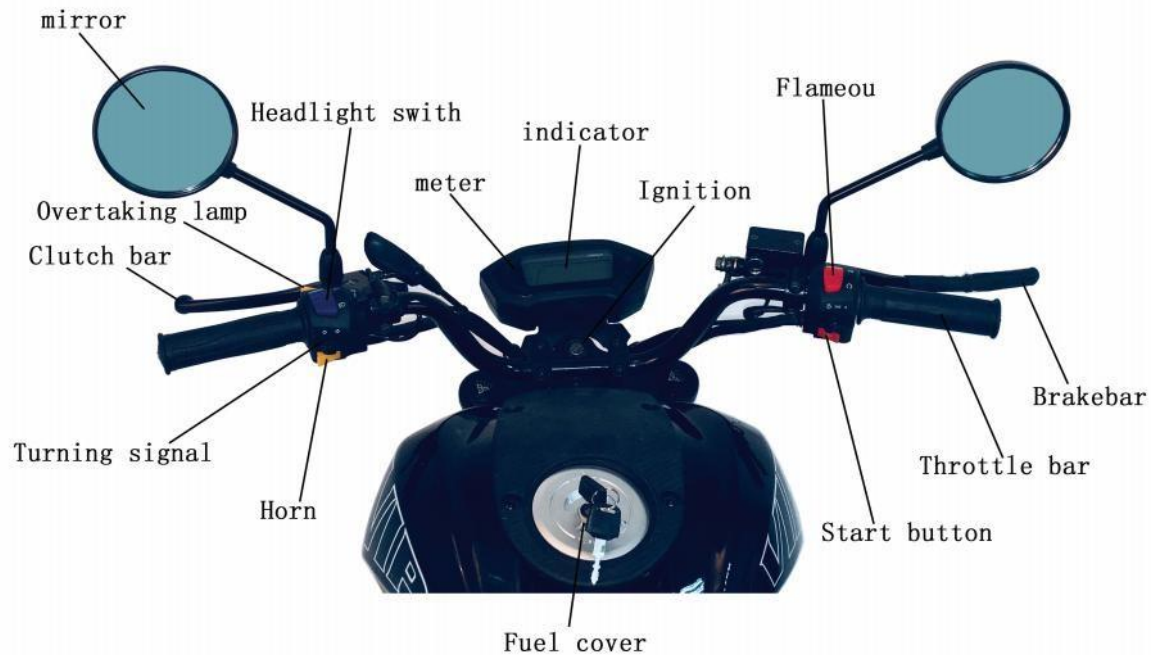


The frame no is engraved on the profile of front pipe.



engraved on the lower left side of crankcase.

SPARE PARTS LOCATION



ACCESSORIES FUNCTION

METER AND INDICATOR

- (1). Left turn signal indicator (green)
- (2). Fuel level warning indicator
- (3). Single mileage meter
- (4). Odometer
- (5). Gear monitor
- (6). Right turn signal indicator (green)
- (7). Neutral indicator (green)
- (8). Clear data
- (9). Clock
- (10). Speedometer
- (11). High beam indicator (blue)
- (12). Mode Settings



IGNITION LOCK Ignition lock is under the indicator panel, three position: LOCK, OFF, ON.

When put the lock in ON position, the headlight and tail light flash. If your vehicle stop and the ignition lock is in ON position, the engine can not run, now ,the headlight and taillight remain shine, it will get the battery release power.

POSITION	FUNCTION	REMARK
LOCK	The handlebar is locked,engine and light can not work	Key can be pulled out
OFF	Engine and the light can not work	Key can be pulled out
ON	Engine and the light work	Key can not be pulled out



Do not drive when the helmet is locked in the vehicle.

SWITCH ASSY Left Switch Assy

Headlight switch

Push the light switch to position to choose dim light or high beam.

Turning signal switch

Push switch left or right, left or right indicator flash.

Horn Button

Press horn button, horn will sound.

Ri2ht Switch Assy

Engine Flameout Switch

Flameout switch of engine is near throttle bar.

Start button

Start button is under engine flameout switch,

Press this start button to start engine, now, the headlight close automatically, but the taillight remain in shine.

Head dim light



Turn signal
horn

flameo



Start button

FUEL TANK, FUEL LOCK

FUEL TANK

The fuel tank's max capacity is 10L.

Insert the key into the tank lock hole, and turn the key to open the tank cover.

After refuel, close it and take out the key.



Use petrol (90#) or above.

⚠ Gasoline is inflammable. When adding oil, check engine whether is switched off and fill at ventilation.

The oil should not exceed limit level. The overflowed oil should be cleaned out.

The oil lock is located on the carburetor, with two positions.



When the vehicle is used, the handle needs the button to open the position and supplies the carburetor to the normal oil supply.



When the vehicle is not used, the handle needs to be screwed to the closed position to stop the oil supply to the carburetor.

When operating the oil switch, be careful not to contact the engine, so as not to be scalded.

1. start engine for 3-5mins without loading.
2. stop engine, keep motor parking in horizontal road.
3. after 2-3mins, put out oil gauge, clean it, insert again but do not fasten, put out again, observe the oil level, the level should be between the upper and lower limits.
4. if necessary, fill oil to upper limit, should not exceed.
5. reinsert oil gauge.
6. check the oil leakage.

TYRE

In order to make sure of your safety driving, the tire should adopt available type and size.

Correct tyre pressure will keep the best driving. Make sure of the credibility of valve cock, replace it if necessary.

Should check tyre pressure under normal temperature, if thermal, the degree will be higher than normal, though you only drive for few miles.

Commended cold tyre pressure:

Mend and Replace tube

Please replace tyre if the tyre thread reach the limit as follows.

Min limit	
Front:	2mm
Rear:	2mm

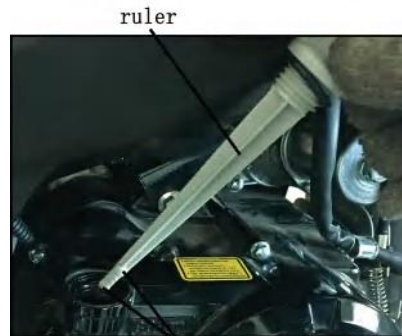
If the tube is damaged, please mend it as soon as possible. The tube is not as good as the new one.

Replace

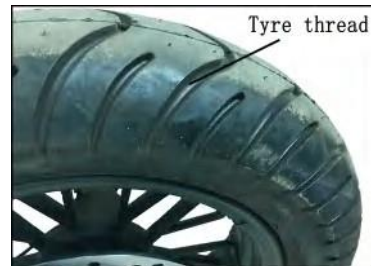
Commended tyre type:

Front : 120/70-12

Rear : 130/70-12



Upper and lower oil level degree



2. OPERATION

SAFE DRIVING

1. Before starting the engine, the vehicle should be checked to avoid components damage or accident.
2. The driver must be trained and must obtain the driving license. The vehicle is not allowed to lend to the persons without license.
3. In order to refrain from hurting yourself by other vehicles, you'd better set out to draw others attention when you are driving, so, please do: put on the bright colored costume.
4. Not be excessively closed to other vehicles. Use the turn signal light, horn etc device correctly.
5. Obey by all local traffic rules strictly.
6. Exceed the speed limit is the reasons of many traffic accidents, so, it is prohibited strictly.
7. When you want to change the way or turn the direction, please turn on the turn signal light to draw attention to others.
8. Hold tightly the steering bar and step on the footrest. The passenger must aim the driver's waist and the feet should step on the pillion footrest.
9. The good in vehicle had better be light and should be tighten in the vehicle.
10. In order to guard the driver and passenger safely, the helmet, facemask, gloves must be worn when driving.
11. During driving, do not touch exhaust muffle, for its temperature is high.

12. Wearing loose clothes is forbidden, for which may be hooked by the wheel, footrest etc, and very dangerous.

LOADING LIMIT AND PRINCIPLE The vehicle only can support you and one passenger, you may feel some different when you accelerate and stop, but it will be safe in limit speed if you can keep vehicle, tyre, brake good.

If exceed loading or the loading is not equip spaced, it will affect the driving and the brake, stability. Some information about loading, accessories, refitting are offered as follows:

Loading

Loading capacity, how to refit are very important for your safety. You should note following information:

Loading limit speed:

Max. Loading capacity: 159Kg, including driver, passenger, all loading goods and accessories.

LOADING PRINCIPLE Your vehicle is mainly used to load you and one passenger. If there is no passenger and you want to load more goods, loading improperly will be an influence on motorcycle's performance and stability.

Goods should be small and light, make sure that the goods are not easy to be hooked by branch or some other things, it will not affect the stability when turning.

The center of gravity of the loading goods should be close to the center of gravity of the vehicle.

the large and heavy load such as sleeping bag or tent is strictly forbidden to hang on the steering handle bar, front shock absorber.

All the loading should be fixed on the vehicle firmly.

Do not exceed the max. loading capacity.

Check whether the two tyres pressure are available.

ACCESSORIES AND REFITTING OF VEHICLE It may affect driving safety when refit the vehicle or use accessory which is not from our company, so, please read the following information when you consider to refit or add some accessories.

ACCESSORIES OF VEHICLE We advice you to use all original accessory which are special designed and tested for TMEC125-1/200-1. Our company cannot test all accessory that is not from our company, so, you must take responsibility for installing them. Get help from dealer, obey by the following regular.

Make sure that the accessory will not weaken light, not short the clearance between vehicle and ground and the incline. Will not limit the parking, driving forward, not change the passenger position, will not affect other control.

Make sure that the electric device will not exceed power capacity to avoid broken fuse

REFITTING FOR VEHICLE

We suggest you not to change any original equipments and not to refit vehicle by any method, it may change its design and operation. And it may weaken decrease the stability and brake performance.

Move or refit exhaust device such as spark plug, mufflers or other devices are illegal.

SAFETY OF FIELD DRIVING

You should study how to drive in hollowess field before you drive to a strange place.

Obey the local field driving law.

Get drive license, avoid to enter into liveliness area, obey “forbidden” mark.

Drive with friend who also has motorcycle, so, you can help each other when you are in trouble.

Your familiar with motorcycle is very important when there is something wrong with your vehicle.

Vehicle speed cannot exceed your ability and experience field, cannot exceed permission field.

Drive carefully if you are not familiar with the ground situation.

Spark arrester and muffler are needed in field driving, not to change exhaust system. remember that people all hate noise. CHECK BEFORE START The motorcycle must be checked before driving. Please check according to the following:

1. check engine oil level: fill oil if necessary and check whether oil leakage.
2. check fuel level: fill oil if necessary and check whether oil leakage.
3. check front and rear brake: check its brake ability, make sure that no brake liquid leakage.
4. check tyre: check pressure.
5. check chain: check loose situation, adjust and lubricate if necessary.
6. check chain bracket: check bracket friction
7. check throttle: check its drive and close situation
8. check clutch: run and adjust if necessary.
9. check light set and horn: check whether the function of headlight, taillight, wrinker, indicator are ok.
10. check spark plug and ignition switch: check whether they are work normally.
11. check fasten of bolt and nut: check astern of bolt and nut for front and rear wheel axle , check other bolt.

and nut.

START ENGINE Start engine as follows:

The vehicle can not be started when the side stand remain stands on the ground.

The exhaust gas contain poisonous carbon monoxide. so, do not run vehicle when the garage is closed. Do not use electrical start exceed 5s in one time, loose the start button, and repress it in 10s.

Prepare

Insert the key before start, open the ignition lock and confirm:

Engine is in neutral position

Flameout switch is in position.

Oil switch open

Start process:

Normal temperature: 10-35 °C (50-95F)

1. wrest clutch lever to total open position.
2. revolve throttle 1/8 - 1/4, press start button, start engine.
3. press clutch lever to center position.
4. heat engine in advance.
5. press clutch lever to total close position after start engine for half mins.

If neutral revolve is not stability, open throttle little.

Start process:

High temperature: 35 °C (95°F) or above

1. do not use throttle lever
2. revolve throttle 1/8 - 1/4, press start button, start engine.

Low temperature: 10 °C (50°F) or lower

1. according to the front four steps in normal temperature.
2. continue to heat engine until the throttle lever to close position.

RUNNING

Please make sure that you are familiar with the side stand structure.

1. user can drive vehicle after heating engine.
2. when engine is in at idle speed, grasp clutch lever, step shift pedal to be at low speed.
3. loose clutch lever, open throttle, increase engine speed, the coordinate of throttle and clutch lever will insure starting stably.
4. when motorcycle reaches the available speed, close throttle, grasp clutch lever, step shift pedal to be at 2nd speed. Repeat this step to 3rd, 4th, the highest speed.
5. drive up shift pedal means shift to higher gear, step down shift pedal means shift to lower gear. Loose it, the shift pedal will return to horizontal position.
6. Don't shift gear when shift pedal clench or throttle has not closed.
7. Don't move vehicle for long distance when the engine closes.
8. Don't revolve engine in high speed when in idle speed BRAKE Use front and rear brake to adjust speed.



In order to gain the max. speed, driver should close throttle, use front & rear brake correctly. Grasp clutch lever before stop to avoid engine stop. Clew

It will decrease the brake performance if driver use brake bar or rear brake pedal alone.

Please brake and close throttle in advance before turning. It will lead to miss under control if driver brake during turning.

Drive and brake performance will decrease when driving in damp & rain situation. Driver should be careful in this situation.

Please shift to lower gear when you driving down the slope.

If driver step to the rear brake pedal or grasp the brake bar when driving, it will send wrong information to other drivers, also will lead the brake device too hot, decrease its effect.

STOP

1. Turn on the turn-signal in advance when driver are close to parking place to remind the back and side vehicles. Close the throttle, use front & rear brake in advance, stop slowly.
2. Step shift pedal to neutral, close throttle switch, turn to left direction. Close ignition switch, pull out the key.
3. Use side stand to support vehicle when stop, stop in smooth ground to avoid overturn.

4.Lock the steering handle bar.

GUARD AGAINST THEFT

1. lock the steering lock, do not leave key in key hole.
2. make sure that your vehicle has been registered correctly and in time.
3. if possible, stop vehicle in garage which is locked.
4. should adopt extra guard device against theft in additional.

3. MAINTENANCE

IMPORTANCE OF MAINTENANCE

A well maintained motorcycle will guarantee the safety, economic.

BD125 — 1/BD125-15 can be driven in city street and in field. So, it is very important to check and maintenance before drive.

We offer you a maintenance schedule as follows to help you maintenance vehicle correctly.

Safety maintenance

The chapter includes some important maintenance task, if you have some base mechanical maintenance skill, you can adopt some tools offered with vehicle.

The other tasks which is difficult, and need special tool should be operated by special people.

Safety prevent

Before maintenance and mend, please make sure that the engine is not work, it will help you to eliminate some potential dangerous:

1. Engine exhaust gas contain carbon monoxide, so, there should be enough breath when engine running.
2. Cooling the engine and the exhaust system, before contact to avoid being burned by fire.
3. Do not operate during engine running (except the indication), to avoid be damaged by running part.

Please read this instruction before start to maintenance and mend, make sure that you have the needed tool and skill.

Please stop vehicle in horizontal ground, use side stand.

Be careful when operate near petrol.

In order to guarantee the quality and creditability after men ding, please adopt the original part.

MAINTENANCE SCHEDULE

Check before driving in daily maintenance.

I: check, clean, adjust C: clean R: replace L: lubricate

Check before driving in daily maintenance.

I: check, clean, adjust C: clean R: replace L: lubricate

Frequency		any	Degree of meter [note (1)]				
			× 1,000km	1	4	8	12
			× 1,000mi	0.6	2.5	5	7.5
Frequency		note	month		6	12	18
*	Throttle cable				I	I	I
*	Fuel filter				C	C	C
*	Throttle operation				I	I	I
	Air cleaner				C	C	R
	Air cleaner pipe				C	C	C

*	Spark plug				I	R	I
	Valve clearance			I	I	I	I
	Engine lubrication oil			R	R	R	R
*	Engine luboil filter						C
**	Luboil filter						C
*	Engine idle			I	I	I	I
	Chain			every 1,000km I,L			
	Chain bracket				I	I	I
	Brake system				I	I	I
	Brake wearing				I	I	I
	Brake system			I	I	I	I
*	Clutch system			I	I	I	I
	Side stand				I	I	I
*	Shock absorber device				I	I	I
*	Fasten nut & bolt			I		I	
**	wheel / tyre			I	I	I	I
**	Steering bearing			I			I

The tools in toolbox as follows:

10×12mm open wrench

14×17 open wrench

No 1 screwdriver

No 3 screw driver

Screw driver bar

Spark plug collar

Tool bag

Air cleaner should be maintained regularly, specially the places with damp or full with dust.

Wrest off the screw of the air cleaner

Take out the core

Check whether the core is clean and damaged

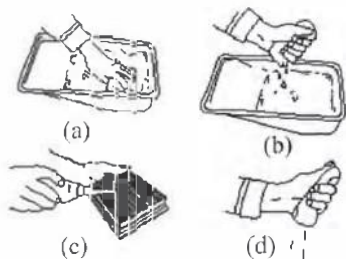
Please replace the core if necessary

Please clean it according to the right picture, if necessary

Keep core dry

Clean the bracket, install it Air cleaner pipe





Air cleaner pipe

1. dismantle the pipe plug, exhaust the deposit to available container.
2. reinstall the pipe plug.

Maintain frequency in rain day, throttle is full open or deposit can be seen clearly

ENGINE LUBRICATION OIL

Viscosity

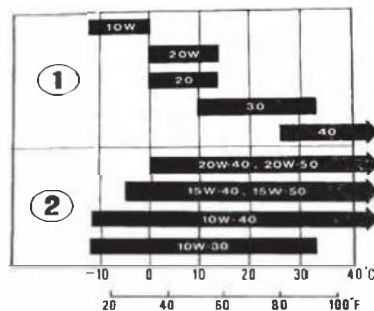
Select luboil's viscosity according to the driving temperature. The below chart show how to choose the available viscosity degree

The single degree is available for those which do not have large temperature differences

The multi-degree is available fbr those which have large temperature differences.

“W” (means WINTER) showed in the chart is available for frigid zone.

In order not to replace oil or replace few times, we suggest you to choose multi-degree luboil.



Engine luboil / oil filter

Engine luboil is the main factor which effect the engine usage. So, please replace the engine luboil according to the maintenance schedule.

Driver should replace luboil more frequently when driving with much dust.

Please deal with the used engine luboil carefully, to avoid environment pollution. We suggest you to put it into sealed container and return it to local service station. Do not pour it into dustbin or directly into ground or slot. It will be bad to your skin if the skin contact oil for long time, we suggest you to clean your hand once you finished dealing.

You need torque wrench to replace luboil, If you do not have this tool and necessary tool, we suggest you to

let your dealer do it.

Please replace lubeoil under normal temperature.

1.screw off oil dip rod from the right crankcase

2.lay a oil-relief plate under crankcase, dismantle the filter cover, then, the spring and the filter will pull out automatically.

3.clean the oil filter

4.check the oil filter, seal rubber, o-ring

5.install the filter, spring and filter cover,fasten the cover. Torque: 1.5N.m..

6.add commended lubeoil from right crankcase: 0.85L-0.95L.

7.screw the oil dip rod.

8.start the engine,let it in idle running in 3-5 mins.

After the engine stop in 2-3 mins, check whether the oil level is betwelow limits.

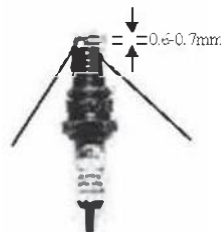
Make sure that there is no oil leakage.

PLUG SPARK SELECTION AND REPLACEIn general situation, the thervalue is according to the requirement. If the vehicle always drive in high-keep high-speed in long-time, it should be replaced within lower thermal field.

PLUG SPARK SELECTION AND REPLACEDDo not choose spark plug with unavailable field.

1.clean the dirt around spark plug button.

2.pull out spark plug cap, dismantle the spark plug by special tool supplied in the too box.



3. check the electrolyte abrasion frequently. The center electrolyte should have the angle edge, the side electrolyte should not be corroded. Replace spark plug if necessary.

4. check the spark plug clearance by gauge with metal contactor. Adjust it if necessary.

The clearance should be: 0.6-0.7mm.

5. make sure that the core seal is ok.

6. add core seal, screw the spark plug.

7. if use a wrench to screw a new spark plug, right revolve $1/2$ circle. If screw an old spark plug, revolve $1/8 - 1/4$ circle.

8. install the spark cap.

BRAKE SYSTEM This vehicle adopts front&rear brake.

Front brake

When the front brake piece fractured, the brake liquid level down.

Should check the brake liquid and brake piece regularly. Should check this system frequently to make sure that there is no brake liquid leakage. If the front bar stroke become large, but the brake piece's wearing has not exceeded the limit, there may be air flowing into brake system, ask dealer to check.

Brake liquid level

Brake liquid should be between the upper and the lower limits. If the level is just in or lower than the lower limit, check the brake piece friction situation.

Excessive worn brake piece should be replaced. If do not been weared, check brake system leakage. If brake system leakage, contact with dealer, ask them to mend.



Min level mark



Max level mark cup Min level mark

Rear brake cup level

Oil cup is set under right side cover, when the rear brake piece friction, the oil level down.

Check oil cup level, the brake liquid level should between the upper and the lower limits. If the level is just in or lower than the lower limit, check the brake piece friction situation.

Excessive worn brake piece should be replaced. If do not been worn, check brake system leakage.

Adjust

1.support the motorcycle by side stand. Adjust the pedal height by adjustable screw.

2.loose the lock nut, adjust the screw to adjust pedal height. Lock it after finish adjusting.

- 3.measure the brake pedal movement distance. The free stroke should be 15-25mm
- 4.adjust nut if necessary.



CLUTCH

If vehicle is difficult to shift or slip when accerelating, clutch is needed to be adjusted. Use adjustable nut. In normal situation, the free stroke of clutch bar is 10-20mm.

- 1.pull backward the cover.
- 2.loose the lock nut, revolve adjustable nut, check.
- 3.if adjustable can not get correct stroke, loose lock nut, screw the adjustable nut, then fasten the lock nut, return cover.
- 4.loose the clutch lever end's lock nut. Revolve the adjustable nut to get named stroke. Fasten the lock nut, check.

5.start the engine, grasp the clutch bar and shift,. Make sure that the engine is not flameout, loose clutch bar gradually, open throttle, motorcycle become to run and accelerate.

If clutch can not be adjusted or can not work, please contact with dealer.



FUEL VALVE CHECK AND ADJUST

- 1. Check whether the throttle is easy to revolve from full open position to full close position.
- 2. Measure the free clearance of throttle.



IDLE

Engine should do idle speed adjustment in normal operation temperature. The lowest rotate speed in 10mins is engine's idle speed.

Ask your dealer to do regular carburetor adjustment.

1. heat engine in advance, keep motorcycle in vertical situation, shift to neutral gear.
2. adjust idle speed by idle adjustable screw.

Idle speed (neutral gear): 1400 ± 150 r/m.

CHAIN

The chain's life is determined by available lubrication and adjust. Lack of maintenance will damage sprocket.

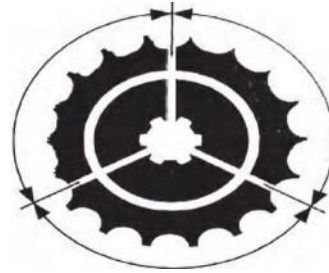
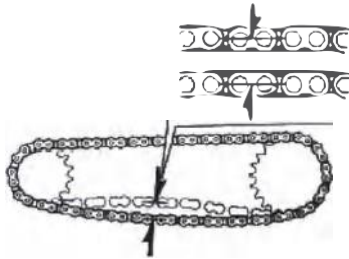
Chain check and lubrication should be considered as one part work before drive

Check

1. stop engine, set supporting under engine, support the rear wheel, shift to neutral gear.
2. check whether the rear part of chain is loose during driving, check elasticity whether is in 20mm-30mm.
3. push vehicle go ahead, stop, check the elasticity. Repeat this step for several times, the elasticity should not be changed.

Note

Chain with excessive looseness will damage the engine body.



4. check sprocket tooth abrasion. Replace it if necessary.

5. if chain or sprocket is excessive worn or damaged, replace them. Do not use new chain and worn sprocket, it will accelerate abrasion.

ADJUST

If necessary, should check and adjust the chain elasticity every 1000km driving as follows:

1. make gearshift in neutral position, close ignition lock. Stop motorcycle in horizontal ground.
2. loose rear axle nut.
3. loose the lock nut of two sides chain adjust.

- 4.adjust two sides adjusting nut with the same revolution until get available elasticity.
- 5.rear axle nut torque: 60-80 N.m
- 6.fasten adjusting nut little, adjust it to available position by wrench, fasten lock nut.
7. recheck chain elasticity.
- 8.reset rear wheel to adjust chain elasticity, the free stroke of rear foot pedal may be affected. Check the rear brake pedal's free stroke, adjust if necessary.

Lubrication

For common oil or other luboil, use SAE80 or No90 gear oil or special luboil for chain.

CHAIN -Dismantle and clean

- When the chain is dust, dismantle and clean it.
- 1. stop the engine, dismantle the chain by the piler.
- 2. clean and chy the chain. Check whether the chain is worn or damaged. Replace if necessary.
- 3. check whether the sprocket is worn or damaged. Replace if necessary. Do not use new chain in worn sprocket.
- 4. lubricate chain.
- 5. set the chain in sprocket.
- 6. adjust the chain and rear brake pedal.

CHECK FRONT & REAR SHOCK ABSORBER

- 1. check front shock absorber by front brake. See whether the shock absorber is oil leakage.

- 2. stop the motorcycle, check the front pipe, if the clearance is too large, the bearing is damaged.
- 3. check all front & rear shock absorber lock part.

SIDE STAND

- Maintain the vehicle according to the maintenance schedule:
- Function check
- Check whether the spring is damaged or loses its elasticity, whether the side stand can move freely.
- 1. driver ride on the motorcycle, open the side stand, make gearshift in neutral.
- 2. start the engine, pull the clutch bar.
- 3. Before putting down the side frame, make sure that the engine stops working.

Dismantle the front wheel

- 1. set a supporting under the engine to support the front wheel.
- 2. loose the lower nut under speedometer, dismantle the speedometer cable.
- 3. take off the front axle cover



- 4. dismantle the front axle nut, dismantle the front axle and front wheel.
- Do not press the brake bar after the front wheel dismantled, brake liquid will be lost.
- If this situation happened, should maintain brake system. Please contact with dealer.

INSTALL

By contrast against dismantle

Put axle (from right to left) go through front wheel hole and left shock absorber in turn.

Fasten the front axle nut by special torque.

Nut torque: 41-44 N.m

After install the front wheel, try brake, check whether the front wheel revolve is ok.

Dismantle the rear wheel

- 1. set a supporting under the engine to support the rear wheel.
- 2. dismantle the rear brake liquid pump.
- 3. loose two side's locking nut and adjusting nut.
- 4. screw off the rear axle nut.
- 5. dismantle the rear axle, chain adjuster and axle collar, push the rear wheel go ahead, dismantle the chain from sprocket.
- 6. dismantle the rear wheel.

INSTALL

By contrast against dismantle

Fasten the rear axle nut by special torque.

Nut torque: 60-80 N.m

Adjust the rear brake pedal and chain

Try brake, check whether the wheel revolve is ok.

BRACK PIECE FRICTION

- The brake piece fiction is determined by its use frequency, drive situation, road situation.
- Check brake piece after regular maintenance.
- Front & rear brake
- Check each brake pieces.
- If any brake piece is damaged, replace the whole set.
Please contact with your dealer.



MAINTAIN BATTERY

■ Battery is free-maintenance (sealed), do not check electric liquid level or add distilled water. If your battery is poor or the electric liquid leakage, please contact with your dealer.

■ Note

■ The battery is free-maintenance, so it will be forever damaged if the cap is dismantled.

■ Dismantle the battery

- 1. dismantle the left side cover
- 2. loose the bolt, take off the battery plate.
- 3. separate the cathode terminal cable from battery, then, separate the anode terminal cable.
- 4. take out the battery from battery box.

REPLACE FUSE

■ If the fuse is damaged frequently, it means that there is short circuit or overload in circuit system. Please contact with dealer.

■ Named fuse is: 5A (used for flasher) and 10A.

■ Note:

■ Do not use fuse with different power value, it will damage the circuit.

■ Main fuse

■ The main fuse is inside the left side cover. The named fuse: 10A

- 1. dismantle the left side cover

- 2. dismantle the electric wire connecting junction
- 3. take off the safety fuse, if the main fuse is damaged, set the new fuse.
- 4. connect the connecting junction, install the left side cover.

MAINTAIN LIGHT SET

- Should keep the headlight clean
- Clean by soft cloth with alcohol, do not use dry cloth or the hand.
- Check the connecting situation of light cable and the switch assy cable.
- Should be very careful when clean the handle bar switch to avoid sewage.

MAINTAIN HORN

- When the horn sounds poor should check power first, then, check the button. Adjust the adjusting nut under the horn to check the sound. Too loosed or too tightened nut will decrease the horn sound.

CLEAN

- Should clean motorcycle regularly to protect paint. And should check whether the vehicle is damaged. Check the brake liquid leakage.
- Do not use the products which are not special for cleaning motorcycle. They may damage the metallic & plastic part of motorcycle.
- If the motorcycle remains very hot ,clean it after the engine and the exhaust system cool.
- Avoid to use the high-pressure water to eject.

CLEAN - Clean the motorcycle

- 1. clean out the loosen soil
- 2. clean motorcycle with soft cloth or the sponge. Do not to pull water directly to muffler ora and the electrical equipments.
- 3. clean plastic part by soft cloth with soft cleanser. Clean dirt place frequently by water, do not use the chemical impregnate, it will damage the plastic part and paint face.
- 4. wash the motorcycle by water after clean.
- 5. day the motorcycle. Start the engine, let it run in 3-5 mins.
- 6. test the brake performance before diving
- 7. lubricate the chain immediately after day.

4. MAINTENANCE DURING PARKING

If parking for a long time, especially in winter, use should check and park correctly.

PARKING

1. replace lubeoil
2. drain off fuel of fuel tank and carburetor into clean container. Close fuel cock and fill rustproof liquid.
3. in order to avoid rust, please operate as follows:
 - Take out spark plug cap. Separate it away from spark plug.
 - Dismantle the spark plug, put it in safety place, do not connect spark plug with spark plug cap.
 - Fill lubeoil of 15ml-20ml into cylinder then, cover spark plug or with clutch.
 - Close the flameout switch, electrical start for 5s, let oil spread inside cylinder
4. clean and dry the motorcycle. Waxing all the paint face.
5. lubricate the chain
6. dismantle the storage battery , and put at ventilation place.
7. gassing the tyte to commended pressure,support the vehicle to let two wheel away from ground.
8. cover the motorcycle, park car in ventilation place.

DRIVE AFTER PARKING

- 1 . clean the motorcycle. Should replace engine oil if park longer than four months.
2. charge the battery if necessary. Then, reinstall the battery.
3. exhaust the surplus rustproof liquid in fuel tank. Fill with new fuel.
4. do all necessary checking before driving.

5. Specifications

Item		Specifications
Dimensions	Overall length x width x height wheel base Ground clearance	1800mm*780mm*1040mm 1230mm $\geq 80\text{mm}$
Weight	Net weight Payload weight Gross weight	90kg 170kg 245kg
Performance	The maximum speed Economic consumption of fuel Grade angle Caster angle Turning circle diameter Maximum noise	$\geq 80\text{mph}$ $\leq 2.1\text{L}/100$ $\geq 6^\circ$ 27° $\leq 4000\text{mm}$ $\leq 78\text{dB (A)}$

Item	Specifications	
The engine	Model Type Bore x Stroke Displacement Compression ratio The rated power The maximum torque Carburetor Ignition type Starting type Lubrication type	54*54mm 127ml 8. 7:1 5. 4kw 7500 \pm 150 (r/min) 9. 2Nm 5500 \pm 150 (r/min) CDI Electric start Pressure Splash

Item		Specifications
Drive system	Drive type Clutch Transmission Gear ration	Chain transmission Wet multi-disc Four files manually 4. 05
Frame		Welded with seamless steel pipe
Suspension	Front shock absorber	Hydraulic
	Rear shock absorber	Hydraulic spring
Brake		Front:disc / Rear: disc
Capacity of tank		5. 5L

Item		Specifications
Electric system	Starter motor	12V 0.3Kw
	Generator	A. C.
	Battery	12V 4Ah
	Headlight/city light	12V 35W/35W /12V 3W
	Front turning light	12V 10W
	Rear turning light	12V 10W
	Brake /taillight	12V 21W/5W
	Horn	12V 1.5A

- light set
- headlight: 12V35W/35W / 12V35W/35W
- taillight/brake light: 12V5W/21W / 12V5W/21W
- turning signal: front: 12V3W/12V3W
- rear: 12V3W/12V3W
- front light: 12V3W/12V3W
- license light: 12V5W/12V5W
- turning indicator: 12V3W/12V3W
- meter light: 12V3W/12V3W
- neutral indicator: 12V3W/12V3W
- remote light: 12V3W/12V3W
- fuse
- main fuse: 10A/15A other fuse: 5A/5A

